

# GLENCORE

Canadian Assets



Glencore's Canadian assets employ more than 8,000 people, including contractors. Our assets include nickel, copper, coal and zinc mining operations and projects; agricultural facilities; and technology and consulting businesses. Our sites span seven provinces and one territory and are significant contributors to the Canadian economy. In 2012, we paid more than \$750 million in wages, taxes and royalties and spent \$1.6 billion on Canadian goods and suppliers.

## zinc

### **CEZinc Refinery (25%)**

#### **Valleyfield, Québec**

Employs: 600

Operations: Zinc refinery and sulphuric acid plant. Production began in 1963.

### **Brunswick Smelter**

#### **Belledune, New Brunswick**

Employs: 400

Operations: Lead smelter and sulphuric acid plant. Production began in 1964.

### **Matagami Mine**

#### **Northwestern Québec**

Employs: 240

Operations: Perseverance mine - Production began in 2008.

Project: Bracemac-McLeod - Mine development commenced in 2010.

### **NorFalco**

#### **Mississauga, Ontario**

Employs: 20

Operations: Merchant marketer of sulphuric acid.

### **General Smelting**

#### **Lachine, Québec**

Employs: 40

Operations: Zinc and lead foundry.

### **Hackett River Project**

#### **West Kitikmeot, Nunavut**

Employs: 80 (Feb-Oct)

Proposed zinc, lead, copper, silver and gold mine. If approved, production could begin by 2018.

### **Errington-Vermillion Project**

#### **Sudbury, Ontario**

Two deposits were previously mined in the 1920s and 1950s. Approximately nine million tonnes, polymetallic- zinc, lead, copper, silver, gold. Potential mine rate of 2,900 tonnes per day.

### **Kidd Operations**

#### **Timmins, Ontario**

Employs: 1,300

Operations: Underground mine, concentrator. Production began in 1966.

## agriculture

### **Viterra**

#### **Regina, Saskatchewan**

Strategically located in the heart of the growing region. Sixty-five grain elevators, eight special crop facilities, six port facilities. Storage capacity of 1.47 million tonnes. Port position through six port terminals across Canada.





## copper

### **Horne Smelter** **Rouyn-Noranda, Québec**

Employs: 700

Operations: Custom copper smelter and sulphuric acid plant. Production began in 1927.

### **CCR Refinery** **Montreal, Québec**

Employs: 650

Operations: Copper refinery and precious metals plant. Production began in 1931.

## coal

### **Chetwynd, British Columbia**

Employs: 8

Steel making coal projects.

If approved, production to begin in 2016.

## nickel

### **Sudbury Integrated Nickel** **Operations**

Employs: 1,300

Operations: Nickel Rim South Mine, Fraser Mine, Strathcona Mill and the Sudbury Smelter. Production began in 1929.

### **Raglan Mine** **Nunavik territory, Northern Québec**

Employs: 950

Operations: Underground mines, concentrator, power plant, accommodation and administration building and fresh water supply. Production began in 1997.

## technology

### **Vancouver, British Columbia**

Employs: 24

Develops, markets and supports technologies for the global mineral processing and metals smelting and refining industries. These technologies include ISASMELT™ smelting processes, IsaMill™ fine grinding technology, Jameson Cell flotation cell, and Albion Process leaching technology.

## XPS Consulting & Testwork Services

### **Sudbury, Ontario**

Employs: 56

Internationally recognized metallurgical consulting and test-work business providing specialist services to clients inside and outside of the GlencoreXstrata group. Provides high quality mineral processing, mineralogy and smelting test-work, modeling and development along with best practices in process control, and materials engineering support.





# Our products in society

**Key commodities:** zinc, copper, lead, alumina, aluminium, ferro alloys, nickel, cobalt and iron ore.

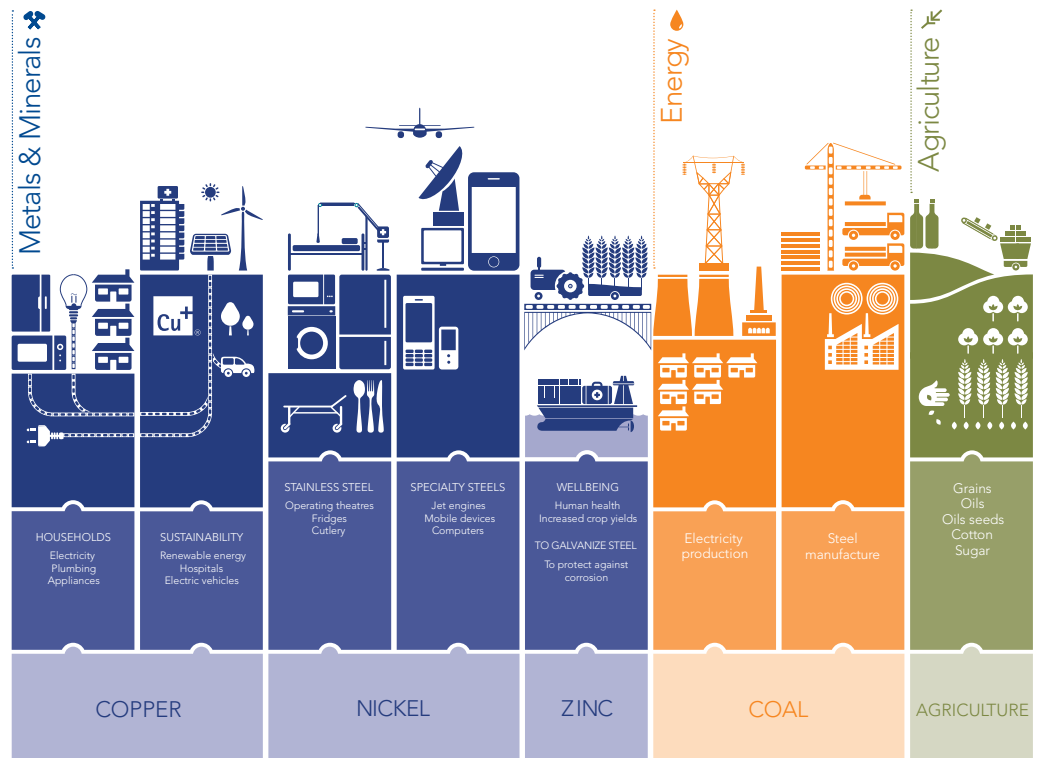
**Underpinned by:** producing, smelting, refining, mining, processing and storage related operations.

**Key commodities:** crude oil, oil products, steam coal, metallurgical coal and coke.

**Underpinned by:** extensive investments in coal mining and oil production operations, ports, vessels and storage facilities.

**Key commodities:** wheat, corn, barley, rice, oil seeds, meals, edible oils, biofuels, cotton and sugar.

**Underpinned by:** investments in farming, storage, handling, processing and port facilities.



## How we create value

### Creating value

Our combination of extensive industrial production facilities and activities, in conjunction with global marketing and distribution capabilities, is focused on delivering superior growth and value creation for the benefit of all our stakeholders.

### Meeting global demand

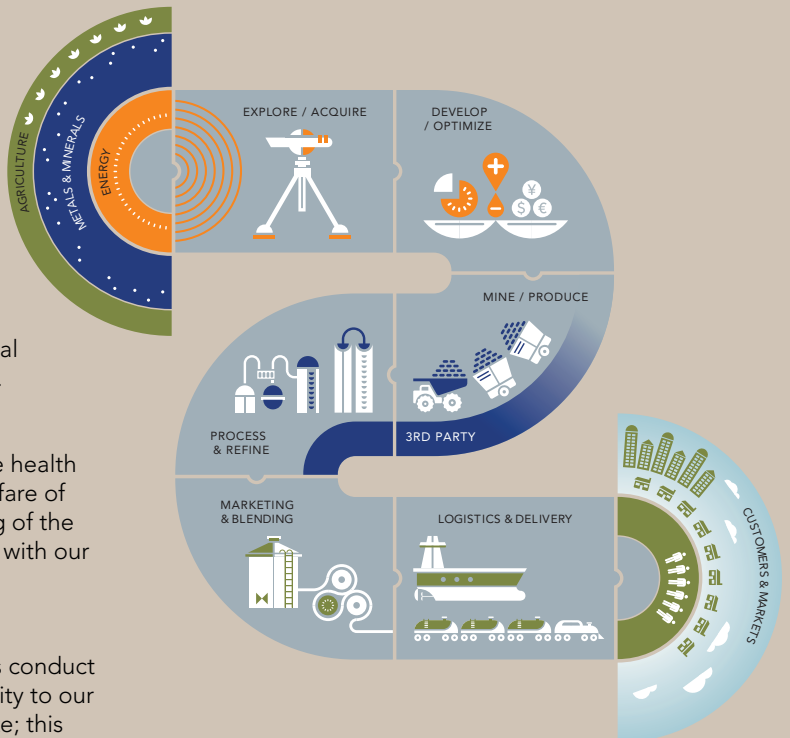
We seek to ensure a consistent and competitive supply of essential commodities to industry worldwide. Our commodities play an integral role in the production of essential day-to-day products for developed and developing countries.

### Sustainability as standard

We believe that our long-term success requires us to prioritize health and safety and environmental management as well as the welfare of all our workers, contribute to the development and well-being of the communities in which we work, and engage in open dialogue with our stakeholders.

### High quality as standard

We endeavour to maintain high standards of service, business conduct and product quality every day. We understand our responsibility to our customers, suppliers and the communities in which we operate; this requires the highest standards of quality and safety throughout our operations.



**GLENCORE**

100 King Street West, Suite 6900  
Toronto, Ontario M5X 1E3 Canada

Phone  
Website

416 775 1500  
[www.glencorexstrata.com](http://www.glencorexstrata.com)