

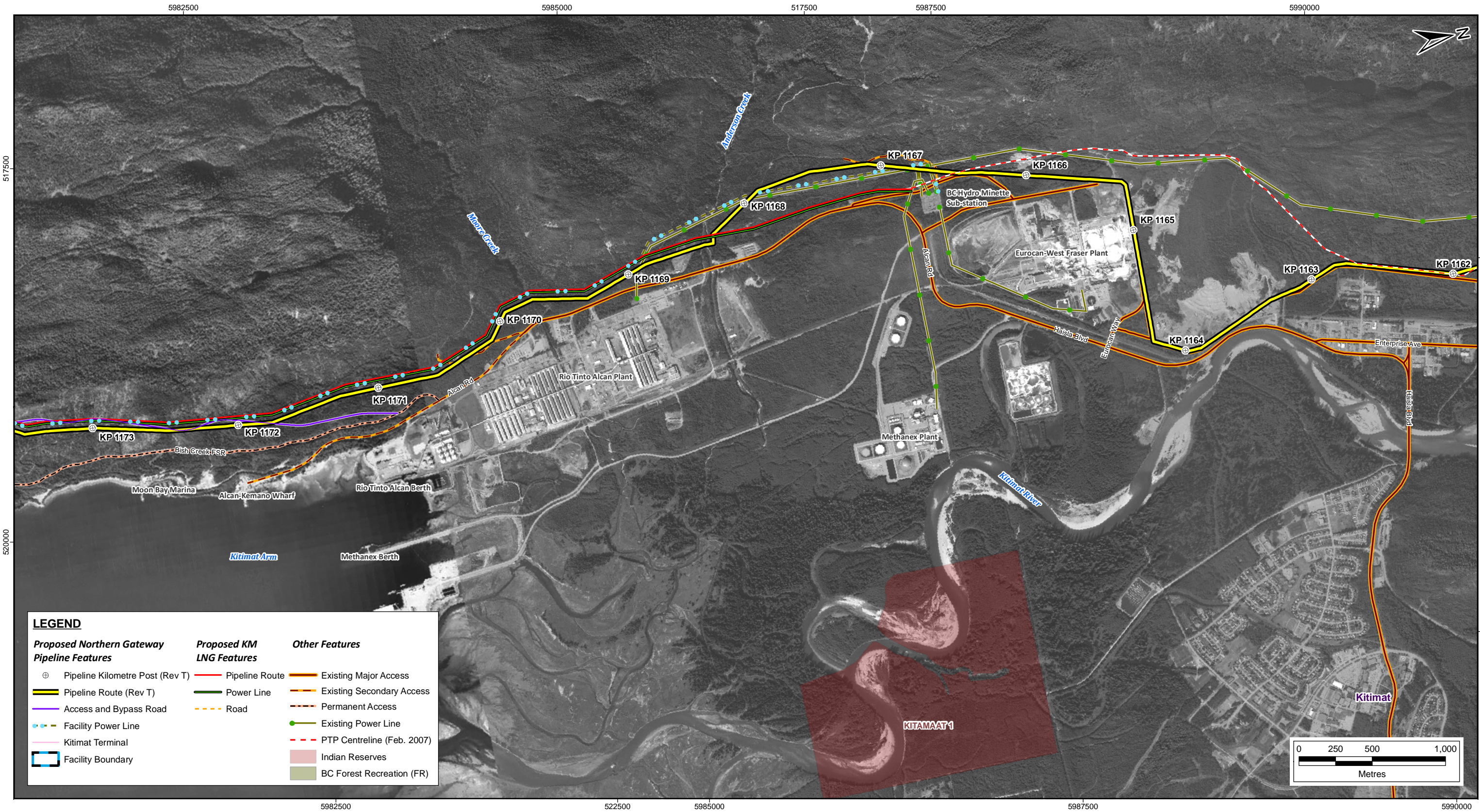


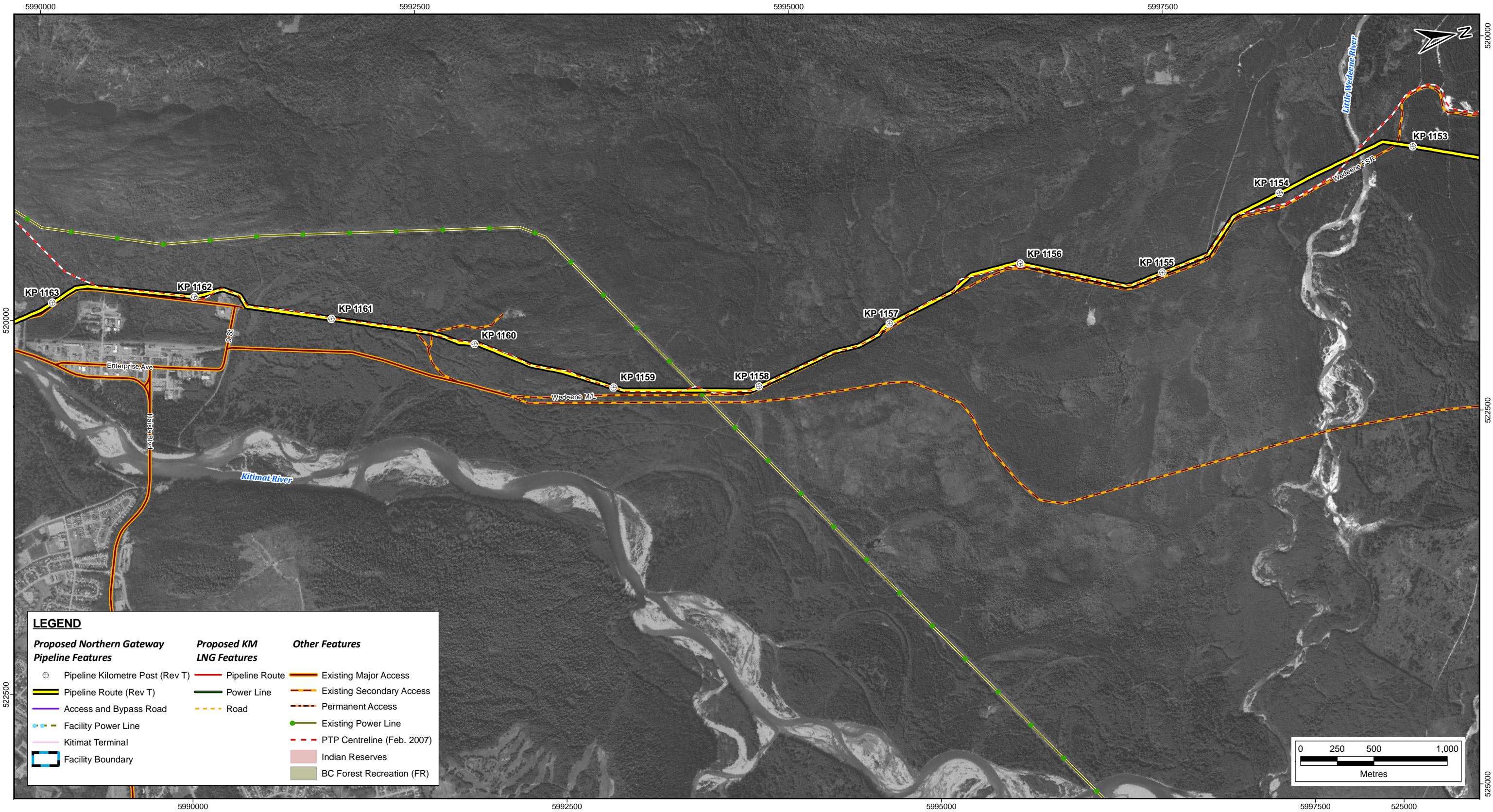




Version: A
NGP_B-FIGMAP-L

 resources & energy	REFERENCES: UTM 9N Projection and NAD 83 Datum. Pipeline Route: Rev T, 2010 (KPs Rev T) supplied by WorleyParsons Calgary. Indian Reserves obtained from GeoBase®, Sept. 2010. B&W Orthophoto imagery acquired from BC Imagery Warehouse, 1m pixel size, from 1996. KM LNG centreline, power line, and road digitized from Sept. 9, 2008 Kitimat LNG Terminal map. PTP centreline current to January 2009. BC Forest Recreation: ILMB, BC Government (Sept. 2010). Produced by WorleyParsons Calgary. The information used to create this product is based on the most current data available on the date of issue, and is considered reliable only at the scale at which the data was created and the scale at which the map was published. This drawing is prepared solely for the use of the contractual customer of WorleyParsons Calgary and WorleyParsons assumes no liability to any other party for any representations contained in these drawings. This map must be printed at full scale (100%) in order for the scale to remain correct.	SCALE 1:25,000
<div>PREPARED FOR</div>  <div>ENBRIDGE NORTHERN GATEWAY PIPELINES</div>	ENBRIDGE NORTHERN GATEWAY PROJECT	DATE 18 Aug 2011
	<div>Proposed Northern Gateway and KM LNG Pipelines and Facilities</div>	FIGURE ID 11-036-001
		REVISION 0
		FIGURE NO. JRP IR 3.10a-1



 <div>resources & energy</div>	REFERENCES: UTM 9N Projection and NAD 83 Datum. Pipeline Route: Rev T, 2010 (KPs Rev T) supplied by WorleyParsons Calgary. Indian Reserves obtained from GeoBase®, Sept. 2010. B&W Orthophoto imagery acquired from BC Imagery Warehouse, 1m pixel size, from 1996. KM LNG centreline, power line, and road digitized from Sept. 9, 2008 Kitimat LNG Terminal map. PTP centreline current to January 2009. BC Forest Recreation: ILMB, BC Government (Sept. 2010). Produced by WorleyParsons Calgary. The information used to create this product is based on the most current data available on the date of issue, and is considered reliable only at the scale at which the data was created and the scale at which the map was published. This drawing is prepared solely for the use of the contractual customer of WorleyParsons Calgary and WorleyParsons assumes no liability to any other party for any representations contained in these drawings. This map must be printed at full scale (100%) in order for the scale to remain correct.	SCALE1:25,000
<div>PREPARED FOR</div>  <div>ENBRIDGE NORTHERN GATEWAY PIPELINES</div>	ENBRIDGE NORTHERN GATEWAY PROJECT	DATE18 Aug 2011
		FIGURE ID11-036-002
	Proposed Northern Gateway and KM LNG Pipelines and Facilities	REVISION0
		FIGURE NO. JRP IR 3.10a-2



NGP_B-FIGMAP-L_Version: A	 PREPARED FOR 	REFERENCES: UTM 9N Projection and NAD 83 Datum. Pipeline Route: Rev T, 2010 (KPs Rev T) supplied by WorleyParsons Calgary. Indian Reserves obtained from GeoBase®, Sept. 2010. B&W Orthophoto imagery acquired from BC Imagery Warehouse, 1m pixel size, from 1996. KM LNG centreline, power line, and road digitized from Sept. 9, 2008 Kitimat LNG Terminal map. PTP centreline current to January 2009. BC Forest Recreation: ILMB, BC Government (Sept. 2010). Produced by WorleyParsons Calgary. The information used to create this product is based on the most current data available on the date of issue, and is considered reliable only at the scale at which the data was created and the scale at which the map was published. This drawing is prepared solely for the use of the contractual customer of WorleyParsons Calgary and WorleyParsons assumes no liability to any other party for any representations contained in these drawings. This map must be printed at full scale (100%) in order for the scale to remain correct.	SCALE 1:25,000
		ENBRIDGE NORTHERN GATEWAY PROJECT	DATE 18 Aug 2011
	Proposed Northern Gateway and KM LNG Pipelines and Facilities		FIGURE ID 11-036-003
			REVISION 0
			FIGURE NO. JRP IR 3.10a-3